

ISSUE	DATE	DESCRIPTION
A	12/12/2018	ISSUED FOR DEVELOPMENT APPLICATION
B	18/06/2019	REVISED DEVELOPMENT APPLICATION ISSUE
C	7/08/2019	REVISED AS CLOUDED
D	12/08/2019	REVISED AS CLOUDED
E	23/08/2019	REVISED AS CLOUDED
F	28/08/2019	REVISED AS CLOUDED
G	31/08/2019	REVISED AS CLOUDED
H	16/09/2019	REVISED DEVELOPMENT APPLICATION ISSUE
I	16/12/2020	S4.56 ISSUE

LEGEND:
ST RESIDENTIAL STORAGE CAGES

NOTE: ALL STORAGE CAGES ARE OF A SIZE TO PROVIDE PROVISION FOR THE STORAGE OF A BICYCLE AND ARE PROVIDED WITH A HIGH SECURITY LOCKING MECHANISM

CAR PARKING SUMMARY:

BASEMENT 2 SUMMARY

RESIDENTIAL:
3.2 x 5.4m = 51 CAR SPACES
3.8 x 5.4m = 3 CAR SPACES

B2 TOTAL = 54 CARSPACES

(Additional space for car wash bay provided)

BASEMENT 1 SUMMARY

RESIDENTIAL:
3.2 x 5.4m = 3 CAR SPACES
3.8 x 5.4m = 1 CAR SPACE
2.6 x 5.4m = 12 VISITOR SPACES
(Access) 2.4 x 5.4m = 1 VISITOR SPACE
TOTAL = 17 CAR SPACES

1.2 x 2.5m = 3 MOTORBIKE SPACES

BOWLING CLUB:
2.6 x 5.4m = 69 CAR SPACES
(Access) 2.4 x 5.4m = 8 CAR SPACES
TOTAL = 77 CAR SPACES

1.2 x 2.5m = 9 MOTORBIKE SPACES

CAR SHARE:
2.6 x 5.4m = 1 CAR SPACES

B1 TOTAL = 95 CARSPACES
= 12 MOTORBIKES

GRAND TOTAL = 149 CAR SPACES
= 12 MOTORBIKES

CLIENT:
EASTERN SUBURBS
LEAGUES CLUB

PROJECT:
WAVERLEY BOWLING CLUB

ARCHITECT:
ALTIS
architecture
p 61 2 9364 9000 f 61 2 9571 7930 lower deck jones bay wharf
suite 123 / 26 - 32 pirrama road pyrmont nsw 2009 australia

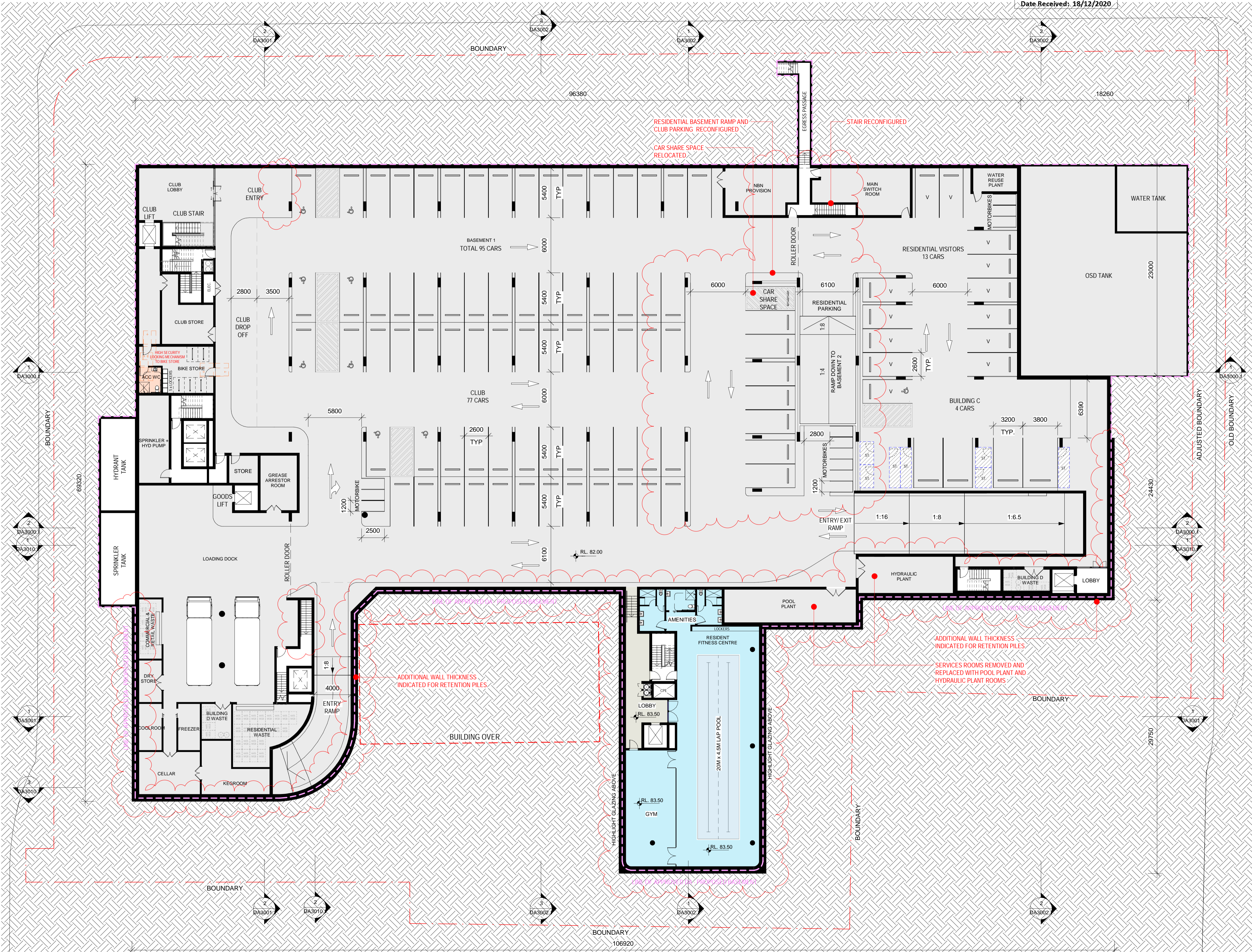
DRAWING TITLE:
PROPOSED BASEMENT 1 PLAN

NOTES:
Nominated architect: Rolfe Latimer : 5535
Copyright remains the property of Altis Architecture Pty Ltd.
Use only figured dimensions.
All discrepancies to be referred to Altis Architecture Pty Ltd prior to construction.
Ensure compliance with the Building Code of Australia and all relevant Australian Standards and Authority requirements.

NORTH:

SCALE:
As indicated @ A1
DRAWN BY: DF
CHECKED BY: RL
PROJECT NO: 2622.01
CAD FILE:

DATE:
30 MAR 2020
ISSUE:
DA1101.1 I



PROPOSED BASEMENT 1 FLOOR PLAN

Scale: 1 : 200

S4.56 ISSUE